

Rimar
LET IT BED



TESSUTI
FABRICS

Sunny art. 2713

cat. EXTRA



REACH
COMPLIANT

PESO WEIGHT	540 g/m ² (±5%)
COMPOSIZIONE COMPOSITION	95% PVC, 5% PU
COMPOSIZIONE SUPPORTO COMPOSITION SUPPORT	85% PL, 15% CO
RESISTENZA ALL' ABRASIONE MARTINDALE ABRASION	100.000
SOLIDITÀ DEL COLORE ALLA LUCE COLOUR FASTNESS TO ARTIFICIAL LIGHT	5

ANTIMACCHIA / ANTI-STAIN
FACILE DA PULIRE / EASY TO CLEAN*

RESISTENZA AL FUOCO / FIRE RESISTANCE:
BS 5852 PART 1 (SU RICHIESTA/ON REQUEST)
EN 1021 - 1 (SU RICHIESTA/ON REQUEST)

* Lavabile con acqua e sapone naturale / Washable with water and natural soap



c. 188



c. 121



c. 122



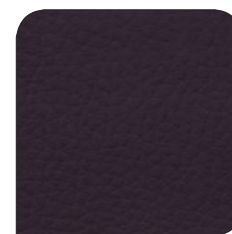
c. 198



c. 134



c. 199



c. 133



c. 195



c. 124



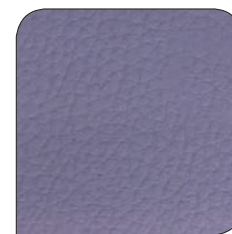
c. 185



c. 196



c. 191



c. 130



c. 192



c. 189



c. 143



c. 131

Stripes art. 2604

cat. EXTRA



REACH
COMPLIANT

PESO WEIGHT	310 g/m ² (±5%)
COMPOSIZIONE COMPOSITION	100% PL
RESISTENZA ALL' ABRASIONE MARTINDALE ABRASION	80.000
SOLIDITÀ DEL COLORE ALLA LUCE COLOUR FASTNESS TO ARTIFICIAL LIGHT	5



c. 642

IDROPELENTE / LIQUID REPELLENT*

RESISTENZA AL FUOCO / FIRE RESISTANCE:
BS 5852 PART 1
EN 1021 - 1

* Rimuove rapidamente il liquido versato / Quickly remove the spilled liquid



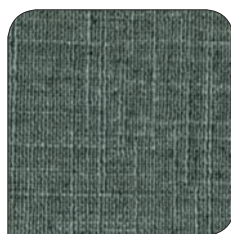
c. 643



c. 644



c. 648



c. 645



c. 646



c. 647



c. 641



c. 649



c. 651



c. 650

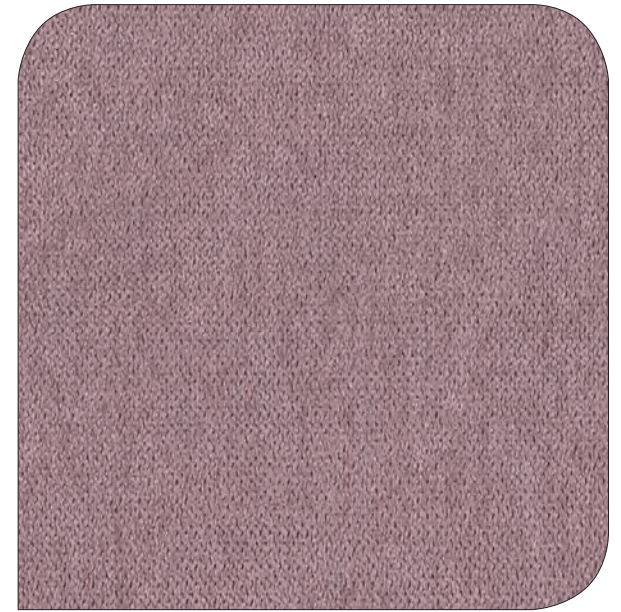
Sand art. 2605

cat. EXTRA



REACH
COMPLIANT

PESO WEIGHT	280 g/m ² (±5%)
COMPOSIZIONE COMPOSITION	100% PL
RESISTENZA ALL' ABRASIONE MARTINDALE ABRASION	100.000
SOLIDITÀ DEL COLORE ALLA LUCE COLOUR FASTNESS TO ARTIFICIAL LIGHT	5



c. 685

IDROREPELENTE / LIQUID REPELLENT*

RESISTENZA AL FUOCO / FIRE RESISTANCE:
BS 5852 PART 1
EN 1021 - 1

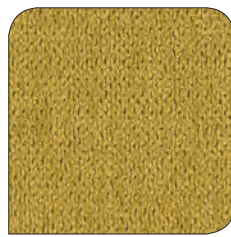
* Rimuove rapidamente il liquido versato / Quickly remove the spilled liquid



c. 681



c. 682



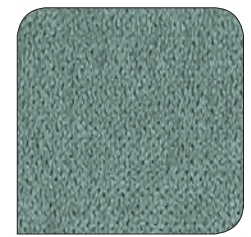
c. 683



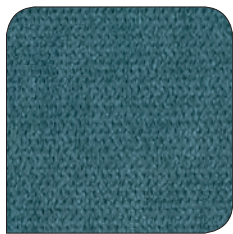
c. 684



c. 686



c. 687



c. 688



c. 689



c. 690

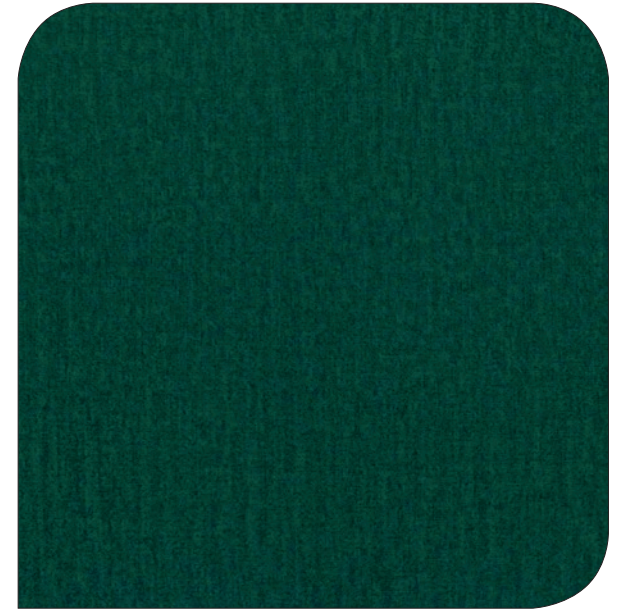
York art. 2606

cat. EXTRA



REACH
COMPLIANT

PESO WEIGHT	330 g/m ² (±5%)
COMPOSIZIONE COMPOSITION	100% PL
RESISTENZA ALL' ABRASIONE MARTINDALE ABRASION	100.000
SOLIDITÀ DEL COLORE ALLA LUCE COLOUR FASTNESS TO ARTIFICIAL LIGHT	4-5



c. 743

IDROPELENTE / LIQUID REPELLENT*

RESISTENZA AL FUOCO / FIRE RESISTANCE:
BS 5852 PART 1
EN 1021 - 1

* Rimuove rapidamente il liquido versato / Quickly remove the spilled liquid



c. 744



c. 745



c. 746



c. 747



c. 748



c. 741



c. 742

Crazy art. 2607

cat. EXTRA



PESO WEIGHT	320 g/m ² (±5%)
COMPOSIZIONE COMPOSITION	100% PL
RESISTENZA ALL' ABRASIONE MARTINDALE ABRASION	100.000
SOLIDITÀ DEL COLORE ALLA LUCE COLOUR FASTNESS TO ARTIFICIAL LIGHT	5

IDROPELLENTE / LIQUID REPELLENT*

RESISTENZA AL FUOCO / FIRE RESISTANCE:
BS 5852 PART 1
EN 1021 - 1

* Rimuove rapidamente il liquido versato / Quickly remove the spilled liquid



c. 821



c. 822



c. 823



c. 824



c. 825



c. 826



c. 827



c. 828



c. 829

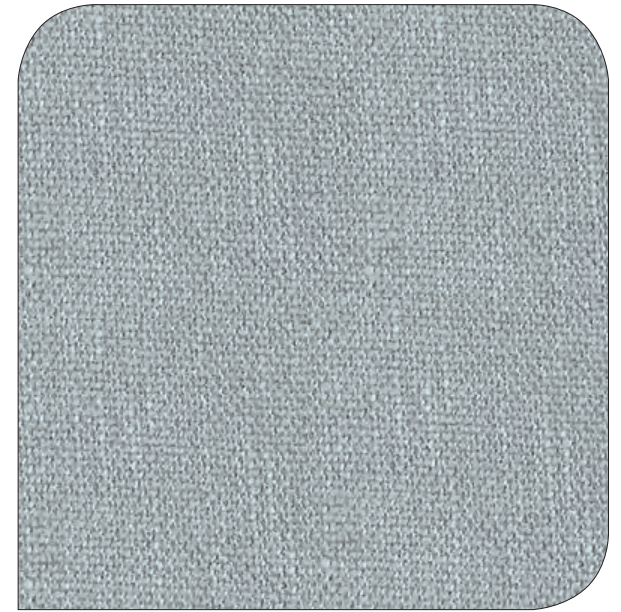
River art. 2810

cat. PRESTIGE



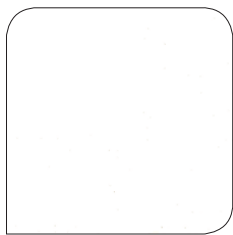
REACH
COMPLIANT

PESO WEIGHT	465 g/m ² (±5%)
COMPOSIZIONE COMPOSITION	90% PL, 10% RY
RESISTENZA ALL'ABRASIONE MARTINDALE ABRASION	40.000
SOLIDITÀ DEL COLORE ALLA LUCE COLOUR FASTNESS TO ARTIFICIAL LIGHT	4-5



c. 506

RESISTENZA AL FUOCO / FIRE RESISTANCE:
BS 5852 PART 1
EN 1021 - 1



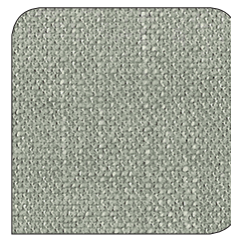
c. 501



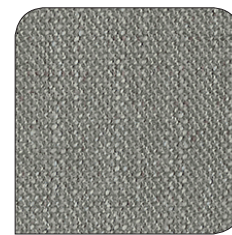
c. 502



c. 503



c. 510



c. 507



c. 508



c. 504



c. 505



c. 509

Carol art. 2812

cat. PRESTIGE



REACH
COMPLIANT

PESO WEIGHT	485 g/m ² (±5%)
COMPOSIZIONE COMPOSITION	80% PL, 20% LI
RESISTENZA ALL' ABRASIONE MARTINDALE ABRASION	87.000
SOLIDITÀ DEL COLORE ALLA LUCE COLOUR FASTNESS TO ARTIFICIAL LIGHT	4-5



c. 223

IDROREPELENTE / LIQUID REPELLENT*

RESISTENZA AL FUOCO / FIRE RESISTANCE:
BS 5852 PART 1
EN 1021 - 1

* Rimuove rapidamente il liquido versato / Quickly remove the spilled liquid



c. 229



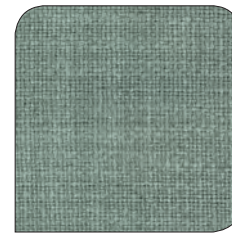
c. 230



c. 231



c. 232



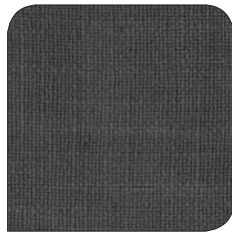
c. 233



c. 227



c. 234



c. 235

Jeane art. 2813

cat. PRESTIGE



REACH
COMPLIANT

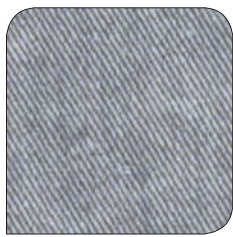
PESO WEIGHT	285 g/m ² (±5%)
COMPOSIZIONE COMPOSITION	100% PL
RESISTENZA ALL' ABRASIONE MARTINDALE ABRASION	23.000
SOLIDITÀ DEL COLORE ALLA LUCE COLOUR FASTNESS TO ARTIFICIAL LIGHT	4

IDROREPELENTE / LIQUID REPELLENT
ANTIMACCHIA / ANTI-STAIN
FACILE DA PULIRE / EASY TO CLEAN*

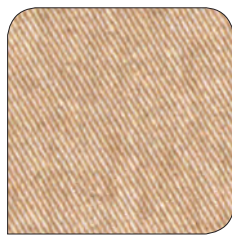
* Lavabile con acqua e sapone naturale / Washable with water and natural soap



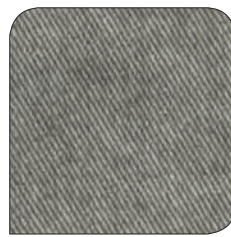
c. 249



c. 246



c. 242



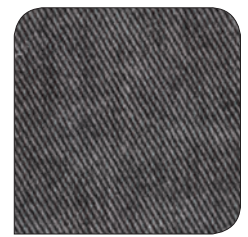
c. 247



c. 250



c. 251



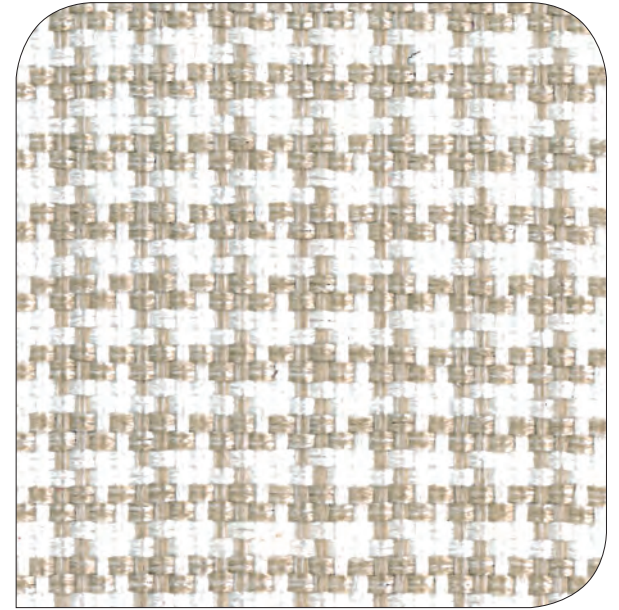
c. 248

Wave art. 2814

cat. PRESTIGE



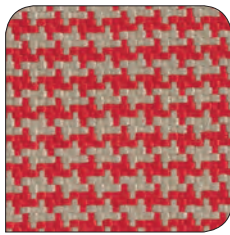
PESO WEIGHT	220 g/m ² (±5%)
COMPOSIZIONE COMPOSITION	100% PP
RESISTENZA ALL' ABRASIONE MARTINDALE ABRASION	48.000
SOLIDITÀ DEL COLORE ALLA LUCE COLOUR FASTNESS TO ARTIFICIAL LIGHT	4



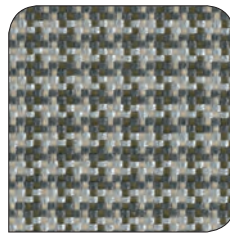
c. 262



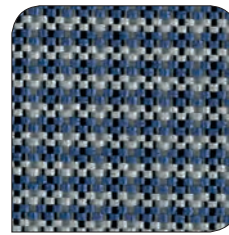
c. 274



c. 273



c. 263



c. 264



c. 261

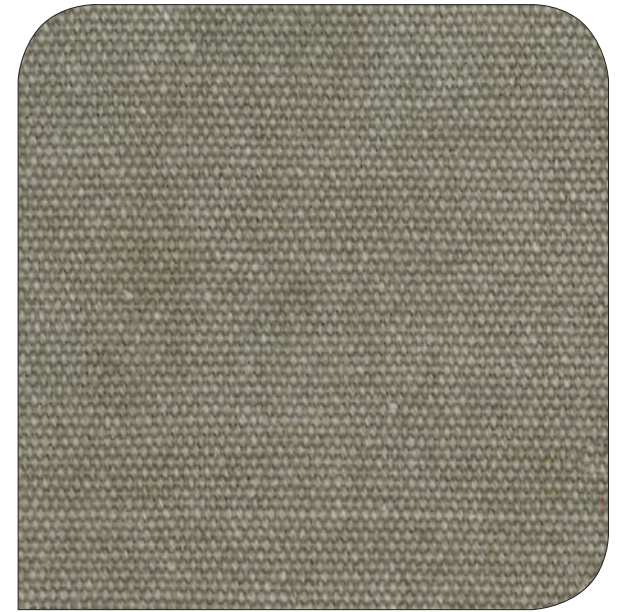
Levi art. 2815

cat. PRESTIGE



REACH
COMPLIANT

PESO WEIGHT	485 g/m ² (±5%)
COMPOSIZIONE COMPOSITION	85% CO, 15% PL
RESISTENZA ALL' ABRASIONE MARTINDALE ABRASION	43.000
SOLIDITÀ DEL COLORE ALLA LUCE COLOUR FASTNESS TO ARTIFICIAL LIGHT	4



c. 343



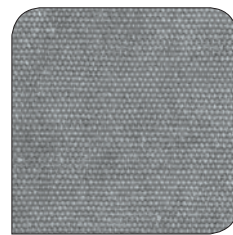
c. 345



c. 344



c. 348



c. 346



c. 341



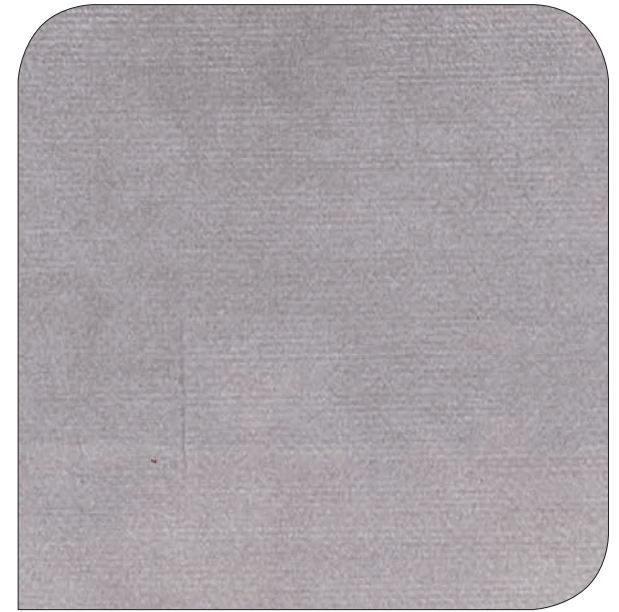
c. 347

Velours art. 2818

cat. PRESTIGE



PESO WEIGHT	370 g/m ² (±5%)
COMPOSIZIONE COMPOSITION	100% PL
RESISTENZA ALL' ABRASIONE MARTINDALE ABRASION	100.000
SOLIDITÀ DEL COLORE ALLA LUCE COLOUR FASTNESS TO ARTIFICIAL LIGHT	5

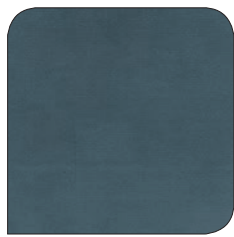


c. 422

RESISTENZA AL FUOCO / FIRE RESISTANCE:
BS 5852 PART 1
EN 1021 - 1



c. 423



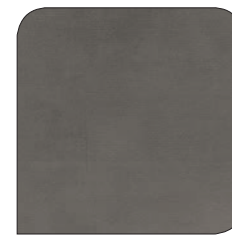
c. 424



c. 433



c. 434



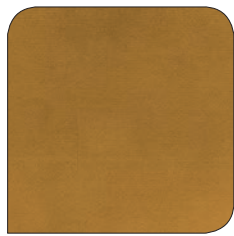
c. 426



c. 427



c. 432



c. 431



c. 428



c. 421



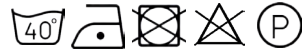
c. 429



c. 430

Lagos art. 2820

cat. PRESTIGE



REACH
COMPLIANT

PESO WEIGHT	330 g/m ² (±5%)
COMPOSIZIONE COMPOSITION	100% PL
RESISTENZA ALL' ABRASIONE MARTINDALE ABRASION	40.000
SOLIDITÀ DEL COLORE ALLA LUCE COLOUR FASTNESS TO ARTIFICIAL LIGHT	4

LIQUIDO E OLIO REPELLENTE / LIQUID AND OIL REPELLENT
ANTIMACCHIA / ANTI-STAIN
FACILE DA PULIRE / EASY TO CLEAN*

RESISTENZA AL FUOCO / FIRE RESISTANCE:
BS 5852 PART 1

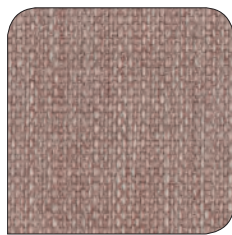
* Lavabile con acqua e sapone naturale / Washable with water and natural soap



c. 492



c. 487



c. 485



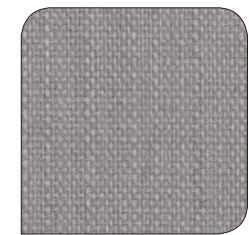
c. 483



c. 482



c. 481



c. 490



c. 491



c. 489

Shade art. 2821

cat. PRESTIGE



REACH
COMPLIANT

PESO WEIGHT	320 g/m ² (±5%)
COMPOSIZIONE COMPOSITION	100% PL
RESISTENZA ALL' ABRASIONE MARTINDALE ABRASION	40.000
SOLIDITÀ DEL COLORE ALLA LUCE COLOUR FASTNESS TO ARTIFICIAL LIGHT	4



c. 526

RESISTENZA AL FUOCO / FIRE RESISTANCE:
BS 5852 PART 1
EN 1021 - 1



c. 522



c. 523



c. 521



c. 524



c. 525



c. 528



c. 527

Babuck art. 2822

cat. PRESTIGE



PESO WEIGHT	520 g/m ² (±5%)
COMPOSIZIONE COMPOSITION	100% PL
COMPOSIZIONE SUPPORTO COMPOSITION SUPPORT	45% PL, 35% PU, 20% CO
RESISTENZA ALL' ABRASIONE MARTINDALE ABRASION	40.000
SOLIDITÀ DEL COLORE ALLA LUCE COLOUR FASTNESS TO ARTIFICIAL LIGHT	4-5

IDROREPELENTE / LIQUID REPELLENT
ANTIMACCHIA / ANTI-STAIN
FACILE DA PULIRE / EASY TO CLEAN*

RESISTENZA AL FUOCO / FIRE RESISTANCE:
BS 5852 PART 1
EN 1021 - 1



c. 572

* Lavabile con acqua e sapone naturale / Washable with water and natural soap



c. 571



c. 569



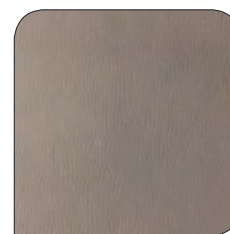
c. 574



c. 567



c. 561



c. 573



c. 562



c. 563



c. 564



c. 565



c. 566



c. 570

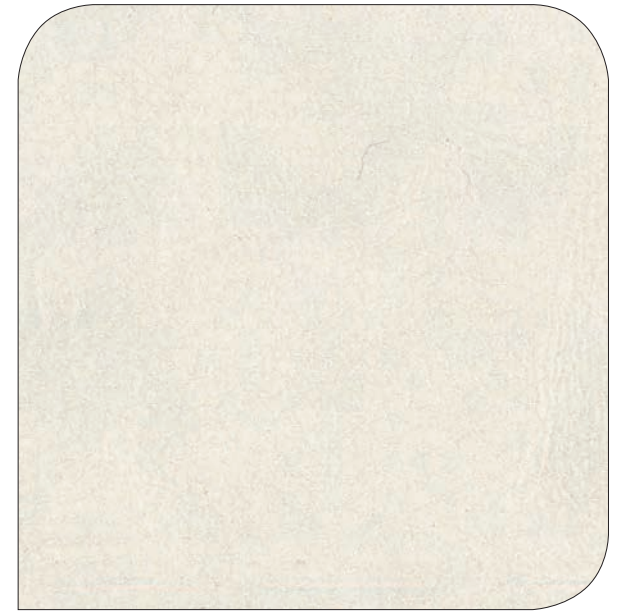
Hawaii Nabuk art. 2824



REACH
COMPLIANT

cat. PRESTIGE

PESO WEIGHT	650 g/m ² (±5%)
COMPOSIZIONE COMPOSITION	100% PVC
COMPOSIZIONE SUPPORTO COMPOSITION SUPPORT	65% PL, 35% CO
RESISTENZA ALL' ABRASIONE MARTINDALE ABRASION	100.000
SOLIDITÀ DEL COLORE ALLA LUCE COLOUR FASTNESS TO ARTIFICIAL LIGHT	4-5



c. 622

ANTIMACCHIA / ANTI-STAIN
FACILE DA PULIRE / EASY TO CLEAN*

RESISTENZA AL FUOCO / FIRE RESISTANCE:
CLASSE 1IM
BS 5852 (Source 0 - 1)
EN 1021 - 1/2

* Lavabile con acqua e sapone naturale / Washable with water and natural soap



c. 628



c. 621



c. 623



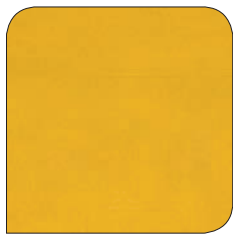
c. 624



c. 627



c. 626



c. 630



c. 629



c. 625

Hawaii Deep art. 2828

cat. PRESTIGE



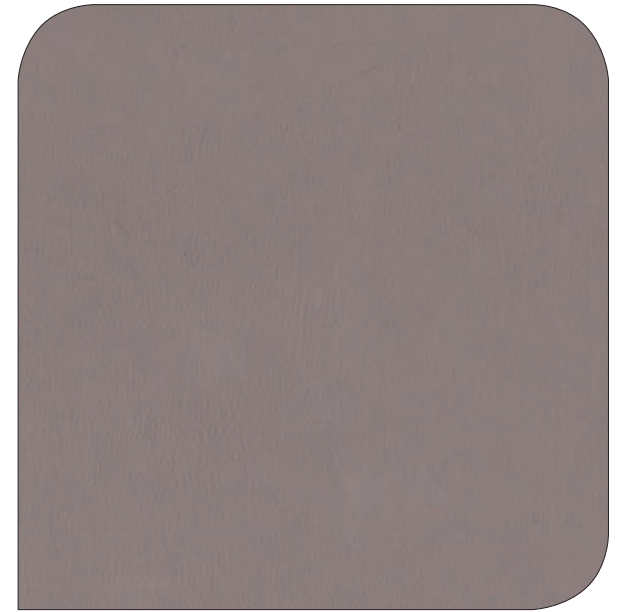
REACH
COMPLIANT

PESO WEIGHT	620 g/m ² (±5%)
COMPOSIZIONE COMPOSITION	100% PVC
COMPOSIZIONE SUPPORTO COMPOSITION SUPPORT	65% PL, 35% CO
RESISTENZA ALL' ABRASIONE MARTINDALE ABRASION	80.000
SOLIDITÀ DEL COLORE ALLA LUCE COLOUR FASTNESS TO ARTIFICIAL LIGHT	4-5

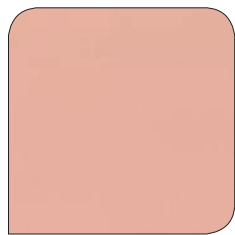
ANTIMACCHIA / ANTI-STAIN
FACILE DA PULIRE / EASY TO CLEAN*

RESISTENZA AL FUOCO / FIRE RESISTANCE:
CLASSE 1IM
BS 5852 (Source 0 - 1)
EN 1021 - 1/2

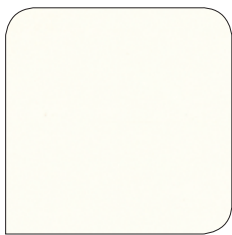
* Lavabile con acqua e sapone naturale / Washable with water and natural soap



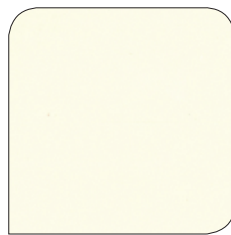
c. 1210



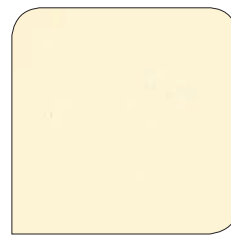
c. 1209



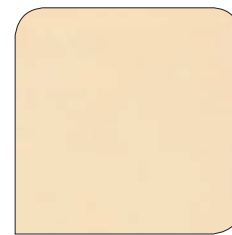
c. 1201



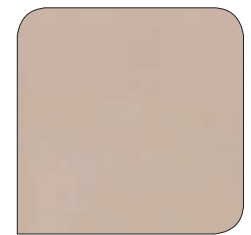
c. 1202



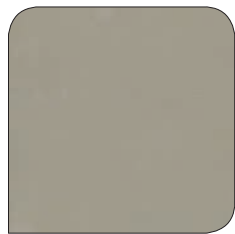
c. 1203



c. 1204



c. 1205



c. 1206



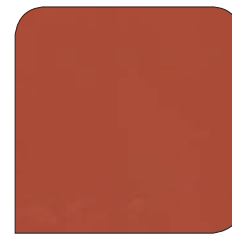
c. 1207



c. 1208



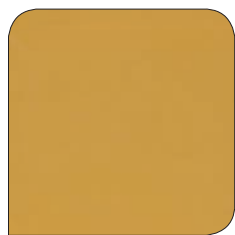
c. 1211



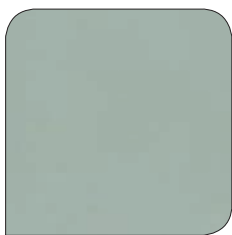
c. 1212



c. 1213



c. 1214



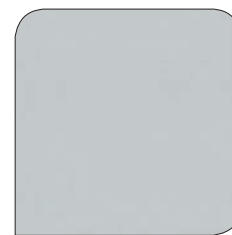
c. 1215



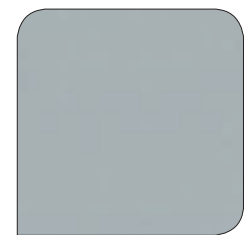
c. 1216



c. 1217



c. 1218



c. 1219



c. 1220



c. 1221

Possono verificarsi leggere differenze di colore. Si prega di controllare la cartella dei campioni di colore / Slight differences in colour may occur. Please check the colour sample folder

Soul art. 2829

cat. PRESTIGE



REACH
COMPLIANT

PESO WEIGHT	440 g/m ² (±5%)
COMPOSIZIONE COMPOSITION	100% PL
RESISTENZA ALL' ABRASIONE MARTINDALE ABRASION	25.000
SOLIDITÀ DEL COLORE ALLA LUCE COLOUR FASTNESS TO ARTIFICIAL LIGHT	4



c. 861



c. 868



c. 869



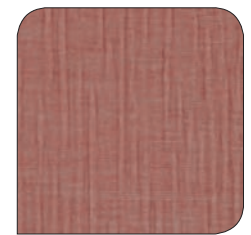
c. 862



c. 867



c. 866



c. 863



c. 865



c. 864

Grammy art. 2830

cat. PRESTIGE



REACH
COMPLIANT

PESO WEIGHT	580 g/m ² (±5%)
COMPOSIZIONE COMPOSITION	100% PL
RESISTENZA ALL' ABRASIONE MARTINDALE ABRASION	65.000
SOLIDITÀ DEL COLORE ALLA LUCE COLOUR FASTNESS TO ARTIFICIAL LIGHT	4

IDROREPELENTE/LIQUID REPELLENT
ANTIMACCHIA / ANTI-STAIN
FACILE DA PULIRE / EASY TO CLEAN*

* Lavabile con acqua e sapone naturale / Washable with water and natural soap



c. 901



c. 902



c. 904



c. 903



c. 905



c. 906



c. 907



c. 908



c. 909



c. 910

Cher art. 2831

cat. PRESTIGE



REACH
COMPLIANT

PESO WEIGHT	420 g/m ² (±5%)
COMPOSIZIONE COMPOSITION	100% PL
RESISTENZA ALL' ABRASIONE MARTINDALE ABRASION	80.000
SOLIDITÀ DEL COLORE ALLA LUCE COLOUR FASTNESS TO ARTIFICIAL LIGHT	4

DROREPELLENTE/LIQUID REPELLENT
ANTIMACCHIA / ANTI-STAIN
FACILE DA PULIRE / EASY TO CLEAN*

* Lavabile con acqua e sapone naturale / Washable with water and natural soap



c. 921



c. 922



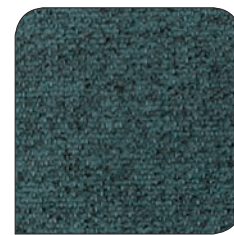
c. 923



c. 924



c. 925



c. 926



c. 927



c. 928

Batik art. 2832

cat. PRESTIGE

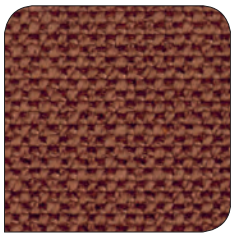


REACH
COMPLIANT

PESO WEIGHT	535 g/m ² (±5%)
COMPOSIZIONE COMPOSITION	100% PL
RESISTENZA ALL' ABRASIONE MARTINDALE ABRASION	100.000
SOLIDITÀ DEL COLORE ALLA LUCE COLOUR FASTNESS TO ARTIFICIAL LIGHT	5



c. 945



c. 946



c. 947



c. 948



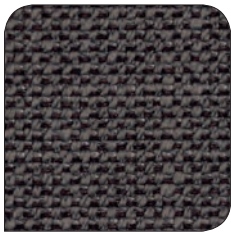
c. 944



c. 943



c. 942



c. 941

Tweet art. 2833

cat. PRESTIGE



REACH
COMPLIANT

PESO WEIGHT	475 g/m ² (±5%)
COMPOSIZIONE COMPOSITION	70% PL, 30% PC
RESISTENZA ALL' ABRASIONE MARTINDALE ABRASION	50.000
SOLIDITÀ DEL COLORE ALLA LUCE COLOUR FASTNESS TO ARTIFICIAL LIGHT	4-5



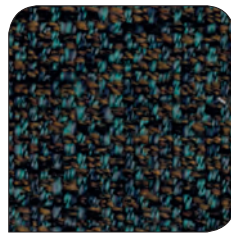
c. 964



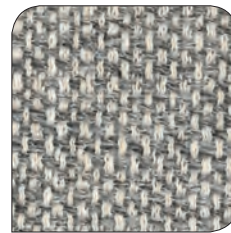
c. 965



c. 968



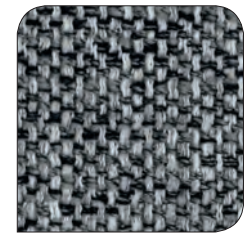
c. 966



c. 961



c. 962



c. 963



c. 967

Cady art. 2834

cat. PRESTIGE



REACH
COMPLIANT

PESO WEIGHT	370 g/m ² (±5%)
COMPOSIZIONE COMPOSITION	100% PL
RESISTENZA ALL' ABRASIONE MARTINDALE ABRASION	105.000
SOLIDITÀ DEL COLORE ALLA LUCE COLOUR FASTNESS TO ARTIFICIAL LIGHT	4-5

IDROPELENTE/LIQUID REPELLENT*

RESISTENZA AL FUOCO / FIRE RESISTANCE:
BS 5852 PART 1
EN 1021 - 1

* Rimuove rapidamente il liquido versato / Quickly remove the spilled liquid



c. 981



c. 982



c. 983



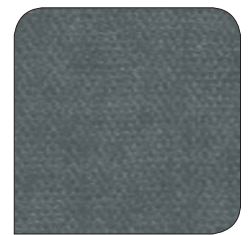
c. 984



c. 985



c. 986



c. 987



c. 988

Couture art. 2835

cat. PRESTIGE

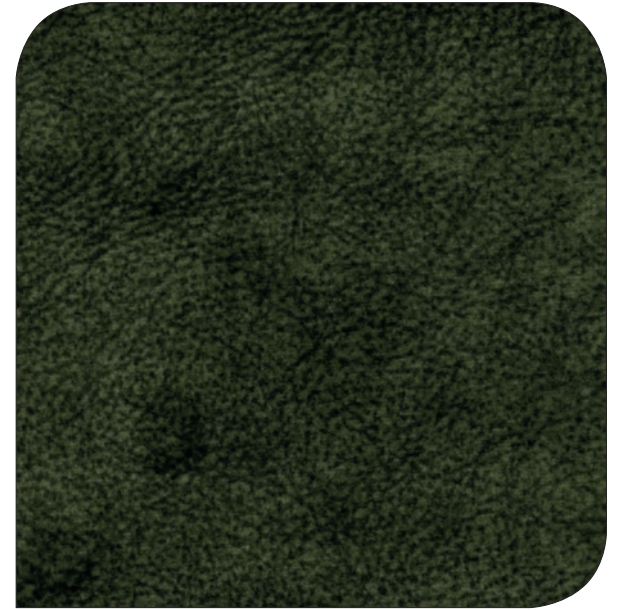


REACH
COMPLIANT

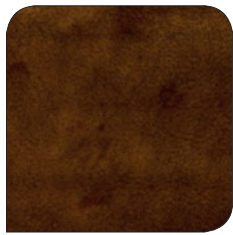
PESO WEIGHT	420 g/m ² (±5%)
COMPOSIZIONE COMPOSITION	100% PL
RESISTENZA ALL' ABRASIONE MARTINDALE ABRASION	100.000
SOLIDITÀ DEL COLORE ALLA LUCE COLOUR FASTNESS TO ARTIFICIAL LIGHT	4-5

IDROREPELENTE/LIQUID REPELLENT
ANTIMACCHIA / ANTI-STAIN
FACILE DA PULIRE / EASY TO CLEAN*

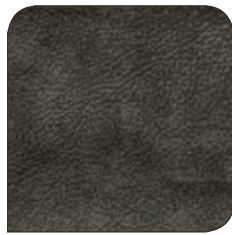
* Lavabile con acqua e sapone naturale / Washable with water and natural soap



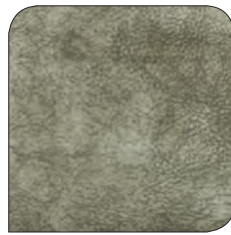
c. 1106



c. 1104



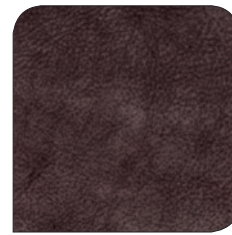
c. 1103



c. 1102



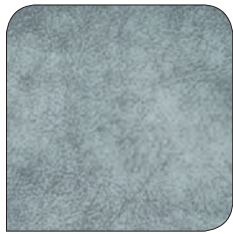
c. 1101



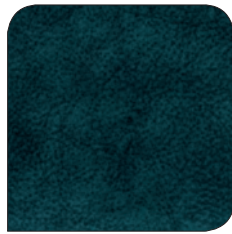
c. 1107



c. 1109



c. 1108



c. 1105

Lisa art. 2836

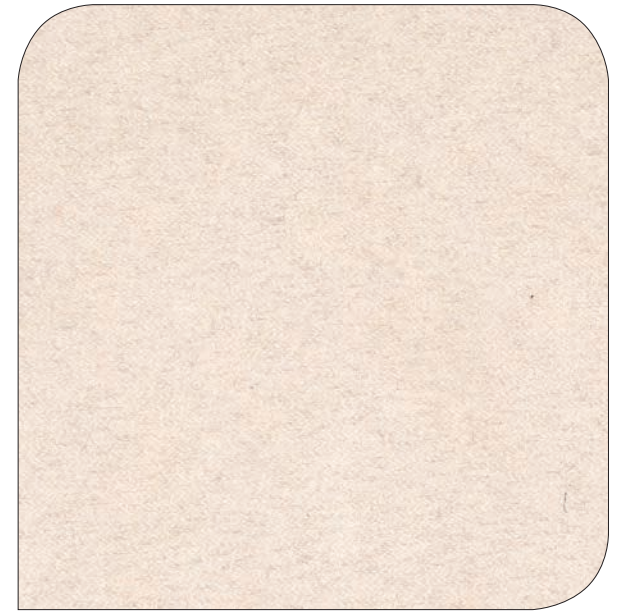
cat. PRESTIGE



REACH
COMPLIANT

PESO WEIGHT	435 g/m ² (±5%)
COMPOSIZIONE COMPOSITION	100% PL
RESISTENZA ALL' ABRASIONE MARTINDALE ABRASION	40.000
SOLIDITÀ DEL COLORE ALLA LUCE COLOUR FASTNESS TO ARTIFICIAL LIGHT	4

IDROREPELENTE/LIQUID REPELLENT
ANTIMACCHIA / ANTI-STAIN
FACILE DA PULIRE / EASY TO CLEAN*



c. 1121

* Lavabile con acqua e sapone naturale / Washable with water and natural soap



c. 1122



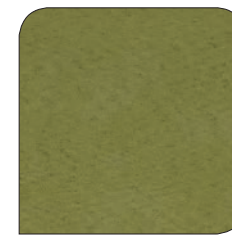
c. 1123



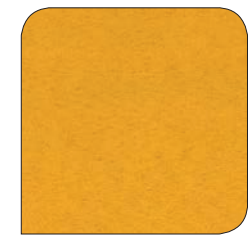
c. 1126



c. 1125



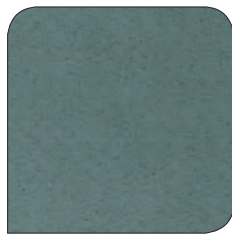
c. 1127



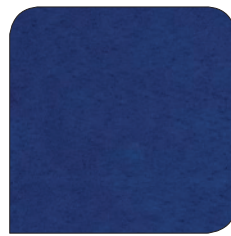
c. 1128



c. 1124



c. 1129



c. 1130



c. 1131

Krusty art. 2837

cat. PRESTIGE



REACH
COMPLIANT

PESO WEIGHT	950 g/m ² (±5%)
COMPOSIZIONE COMPOSITION	100% PL
RESISTENZA ALL' ABRASIONE MARTINDALE ABRASION	30.000
SOLIDITÀ DEL COLORE ALLA LUCE COLOUR FASTNESS TO ARTIFICIAL LIGHT	4-5

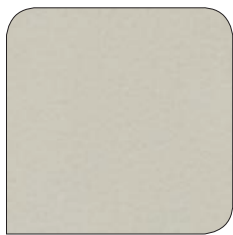


c. 1149

IDROREPELENTE/LIQUID REPELLENT*

RESISTENZA AL FUOCO / FIRE RESISTANCE:
BS 5852 PART 1

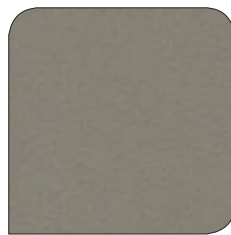
* Rimuove rapidamente il liquido versato / Quickly remove the spilled liquid



c. 1147



c. 1148



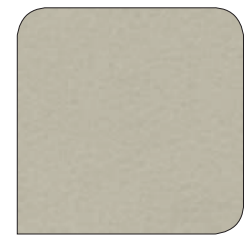
c. 1141



c. 1146



c. 1145



c. 1142



c. 1144



c. 1143

Amy art. 2953

cat. GLAMOUR



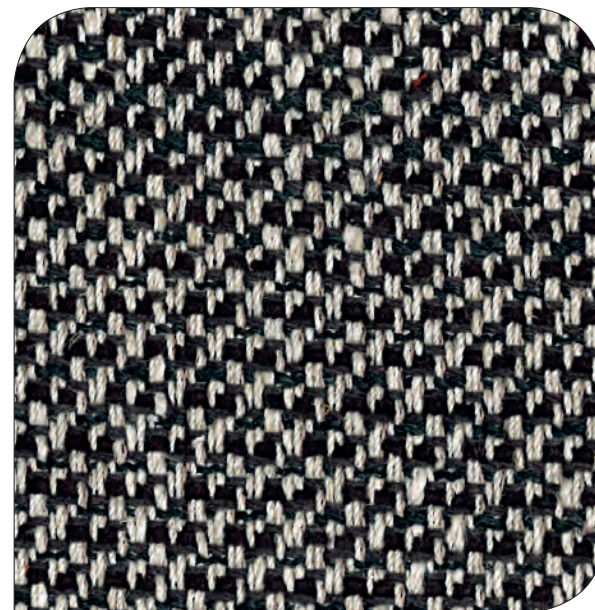
REACH
COMPLIANT

PESO WEIGHT	435 g/m ² (±5%)
COMPOSIZIONE COMPOSITION	30% CO, 23% PL, 18% VI 15% PC, 9% LI, 5% AF
RESISTENZA ALL' ABRASIONE MARTINDALE ABRASION	25.000
SOLIDITÀ DEL COLORE ALLA LUCE COLOUR FASTNESS TO ARTIFICIAL LIGHT	4-5

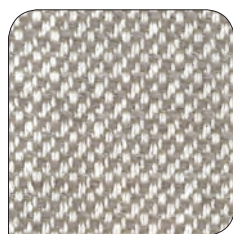
IDROPEPELENTE/LIQUID REPELLENT
ANTIMACCHIA / ANTI-STAIN
FACILE DA PULIRE / EASY TO CLEAN*

RESISTENZA AL FUOCO / FIRE RESISTANCE:
BS 5852 PART 1

* Lavabile con acqua e sapone naturale / Washable with water and natural soap



c. 1161



c. 1162



c. 1163



c. 1164



c. 1165



c. 1166

Poul art. 2954

cat. GLAMOUR



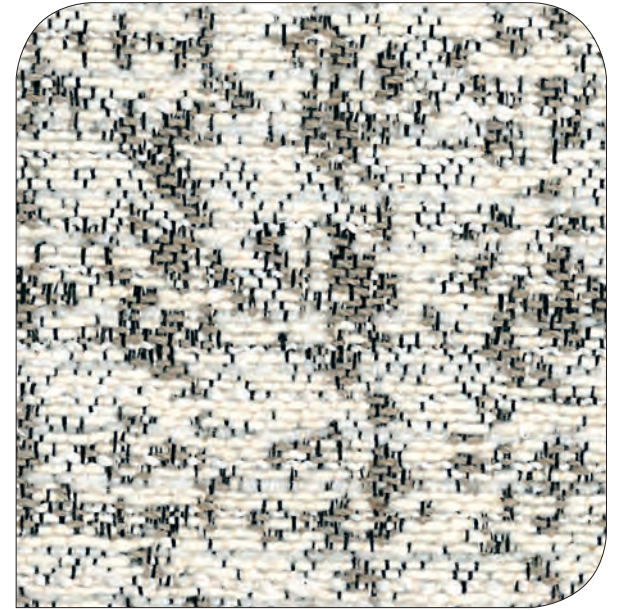
REACH
COMPLIANT

PESO WEIGHT	535 g/m ² (±5%)
COMPOSIZIONE COMPOSITION	50% CO, 35% PL, 10% PC, 5% AF
RESISTENZA ALL' ABRASIONE MARTINDALE ABRASION	35.000
SOLIDITÀ DEL COLORE ALLA LUCE COLOUR FASTNESS TO ARTIFICIAL LIGHT	4

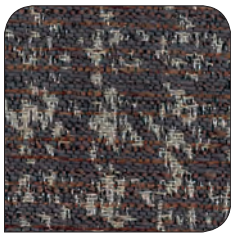
IDROREPELENTE/LIQUID REPELLENT
ANTIMACCHIA / ANTI-STAIN
FACILE DA PULIRE / EASY TO CLEAN*

RESISTENZA AL FUOCO / FIRE RESISTANCE:
BS 5852 PART 1

* Lavabile con acqua e sapone naturale / Washable with water and natural soap



c. 1181



c. 1182



c. 1183



c. 1184



c. 1185

Kal art. 2955

cat. GLAMOUR



PESO WEIGHT	360 g/m ² (±5%)
COMPOSIZIONE COMPOSITION	100% PL
RESISTENZA ALL' ABRASIONE MARTINDALE ABRASION	100.000
SOLIDITÀ DEL COLORE ALLA LUCE COLOUR FASTNESS TO ARTIFICIAL LIGHT	5

IDROPELENTE/LIQUID REPELLENT*

* Rimuove rapidamente il liquido versato / Quickly remove the spilled liquid



c. 1341



c. 1342



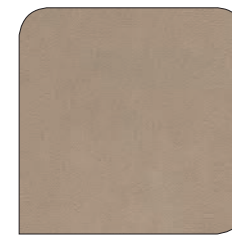
c. 1343



c. 1344



c. 1345



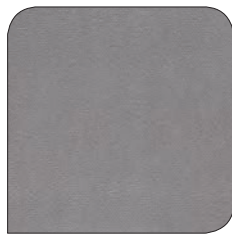
c. 1346



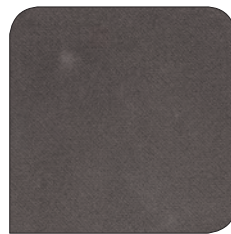
c. 1347



c. 1348



c. 1349



c. 1350



c. 1351



c. 1352

Town art. 2956

cat. GLAMOUR



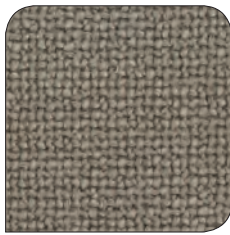
PESO WEIGHT	635 g/m ² (±5%)
COMPOSIZIONE COMPOSITION	37% PC, 26% PL, 21%CO, 16%LI
RESISTENZA ALL' ABRASIONE MARTINDALE ABRASION	25.000
SOLIDITÀ DEL COLORE ALLA LUCE COLOUR FASTNESS TO ARTIFICIAL LIGHT	4-5



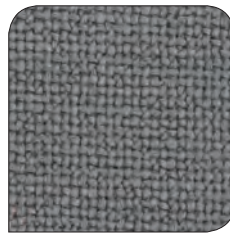
c. 1321



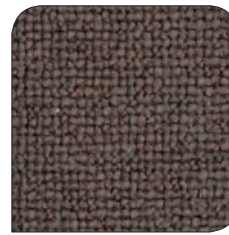
c. 1322



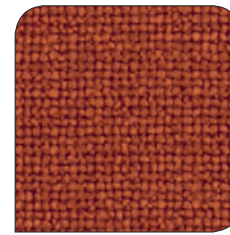
c. 1323



c. 1324



c. 1325



c. 1326



c. 1327

Bouclè art. 2957

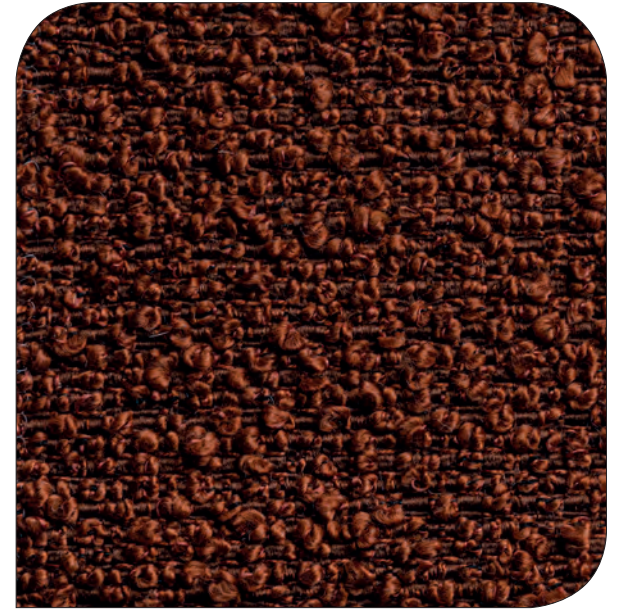
cat. GLAMOUR



REACH
COMPLIANT

PESO WEIGHT	600 g/m ² (±5%)
COMPOSIZIONE COMPOSITION	95% PL, 5% PC
RESISTENZA ALL' ABRASIONE MARTINDALE ABRASION	100.000
SOLIDITÀ DEL COLORE ALLA LUCE COLOUR FASTNESS TO ARTIFICIAL LIGHT	5

FIRE RESISTANCE:
BS 5852 PART 1
EN 1021 - 1



c. 1303



c. 1302



c. 1305



c. 1301



c. 1304

Leather art. 2999 cat. B

REACH
COMPLIANT

TIPOLOGIA DI PELLE TYPE OF LEATHER	Bovina Bovine
SPESSORE THICKNESS	0,9 - 1,0
CONCIA TANNING	Sali di cromo Chromium salt
TINTURA DYEING	Coloranti all' anilina Aniline dyes



c. 51



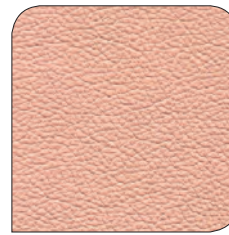
c. 52



c. 53



c. 54



c. 62



c. 55



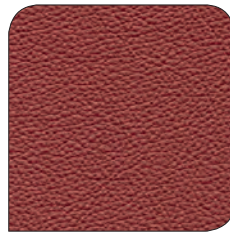
c. 56



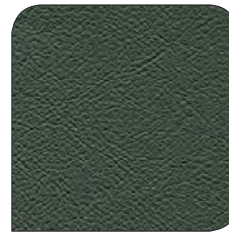
c. 57



c. 58



c. 59



c. 63



c. 60



c. 61

- Evitare la luce diretta del sole ed evitare l'esposizione a fonti di calore / Avoid direct sunlight and avoid exposure to heat sources.
- Essendo un prodotto naturale la pelle potrebbe avere alcune imperfezioni, segno della sua autenticità e bellezza. / As a natural product leather could have some imperfections, sign of its authenticity and beauty.
- Possono verificarsi leggere differenze di colore. Si prega di controllare la cartella dei campioni di colore / Slight differences in colour may occur. Please check the colour sample folder

Leather art. 2998 cat. D

 REACH
 COMPLIANT

TIPOLOGIA DI PELLE TYPE OF LEATHER	Bovina Bovine
SPESSORE THICKNESS	0,9 - 1,1
CONCIA TANNING	Sali di cromo Cromium salt
TINTURA DYEING	Attraverso la tintura di anelina Through dyeing aniline



c. 1001



c. 1002



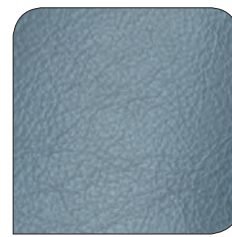
c. 1003



c. 1009



c. 1011



c. 1012



c. 1008



c. 1007



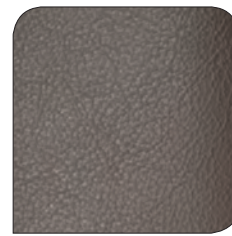
c. 1010



c. 1006



c. 1004



c. 1005

- Evitare la luce diretta del sole ed evitare l'esposizione a fonti di calore / Avoid direct sunlight and avoid exposure to heat sources.
- Essendo un prodotto naturale la pelle potrebbe avere alcune imperfezioni, segno della sua autenticità e bellezza. / As a natural product leather could have some imperfections, sign of its authenticity and beauty.
- Possono verificarsi leggere differenze di colore. Si prega di controllare la cartella dei campioni di colore / Slight differences in colour may occur. Please check the colour sample folder

Leather art. 2997 cat. D

 REACH
 COMPLIANT

TIPOLOGIA DI PELLE TYPE OF LEATHER	Bovina Bovine
SPESSORE THICKNESS	1,4 - 1,6
CONCIA TANNING	Sali di cromo Cromium salt
TINTURA DYEING	Grana naturale ed effetto nabuk Natural grain and nabuk effect



c. 1099



c. 1097



c. 1098

- Evitare la luce diretta del sole ed evitare l'esposizione a fonti di calore / Avoid direct sunlight and avoid exposure to heat sources.
- Essendo un prodotto naturale la pelle potrebbe avere alcune imperfezioni, segno della sua autenticità e bellezza. / As a natural product leather could have some imperfections, sign of its authenticity and beauty.
- Possono verificarsi leggere differenze di colore. Si prega di controllare la cartella dei campioni di colore / Slight differences in colour may occur. Please check the colour sample folder

Texture art. 2912

cat. PRESTIGE



REACH
COMPLIANT

PESO
WEIGHT

200 g/m² (±5%)

COMPOSIZIONE
COMPOSITION

100% CO



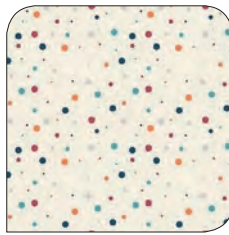
c. 1905



c. 1901



c. 1906



c. 1910



c. 1904



c. 1908



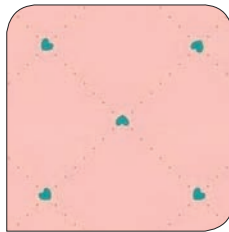
c. 1907



c. 1902



c. 1903



c. 1911



c. 1909

Texture art. 2913

cat. PRESTIGE



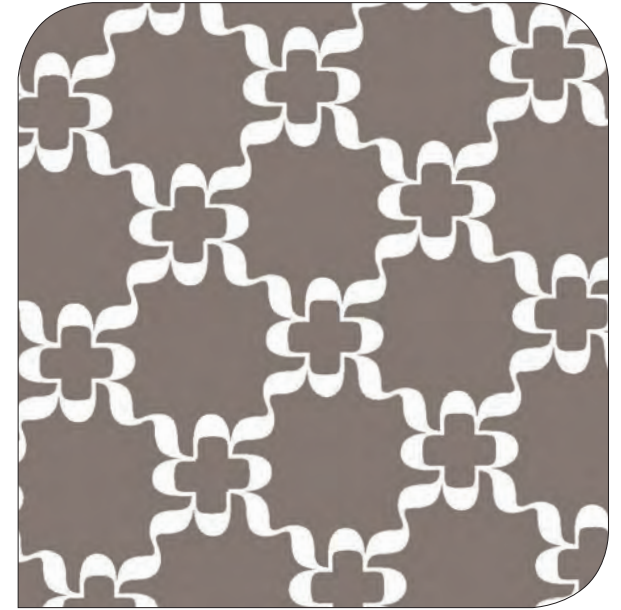
REACH
COMPLIANT

PESO
WEIGHT

300 g/m² (±5%)

COMPOSIZIONE
COMPOSITION

100% PL



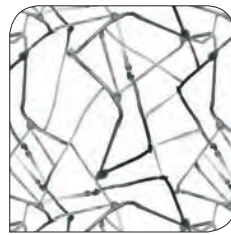
c. 1952



c. 1951



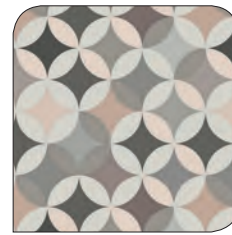
c. 1966



c. 1967



c. 1965



c. 1963



c. 1962



c. 1961



c. 1964

Texture art. 2910



REACH
COMPLIANT

cat. PRESTIGE

PESO WEIGHT	480 g/m ² (±5%)
COMPOSIZIONE COMPOSITION	100% PL
RESISTENZA ALL' ABRASIONE MARTINDALE ABRASION	20.000
SOLIDITÀ DEL COLORE ALLA LUCE COLOUR FASTNESS TO ARTIFICIAL LIGHT	6



c. 799



c. 798

Bed Linen cat. C

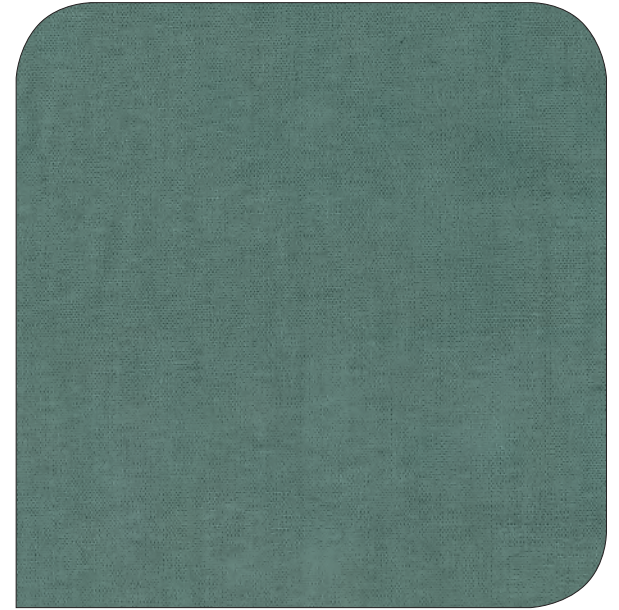


PESO
WEIGHT

110 g/m² (±5%)

COMPOSIZIONE
COMPOSITION

100% Cotton percale



c. 112

Restringimento dopo il primo lavaggio (2%) / Shrinkage after first wash (2%)



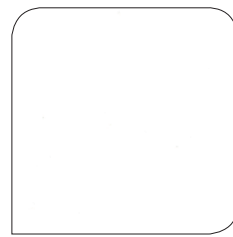
c. 110



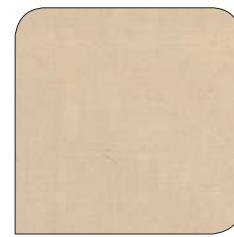
c. 111



c. 108



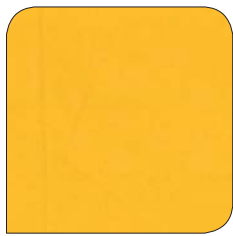
c. 101



c. 102



c. 103



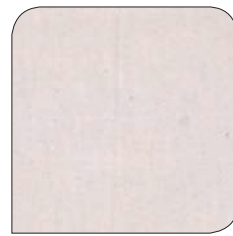
c. 109



c. 104



c. 105



c. 106



c. 107

Rimar
LET IT BED

RIMAR s.r.l.

Via B. Cellini, 1

Zona Art.le GROTTACCIA

62011 Cingoli (MC) - Italy

Tel. +39 0733 610345

Mail: info@rimar.eu - rimar.eu



Rimar - Let it BED



[rimar_letitbed](https://www.instagram.com/rimar_letitbed)